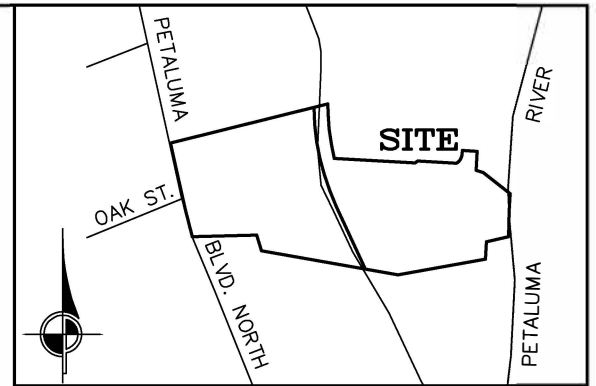


# EXHIBIT A

## ABBREVIATIONS

D.N. DOCUMENT NUMBER  
O.R. OFFICIAL RECORD, SONOMA COUNTY



CITY OF PETALUMA  
LOCATION MAP (N.T.S.)

## NOTE ON LOCATION OF BOOK 448 O.R. PAGE 108

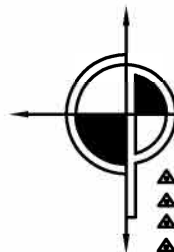
THE GRANT OF EASEMENT FOR SEWER PURPOSES, BEING A 10 FOOT WIDE EASEMENT AND RIGHT-OF-WAY, AS DESCRIBED IN BOOK 448 O.R. PAGE 108 CANNOT BE PLOTTED. THE EXACT LOCATION AND EXTENT OF EASEMENT IS NOT DISCLOSED OF RECORD. THE PLANS FOR THE "MUNICIPAL SEWAGE DISPOSAL PROJECT" AS CALLED FOR UNDER GRANT OF EASEMENT FOR SEWER PURPOSES WERE REQUESTED FROM THE CITY OF PETALUMA. THE CITY WAS NOT ABLE TO LOCATE SAID PLANS.

PETALUMA BLVD. NORTH

LANDS OF  
NORTH RIVER APARTMENTS, LLC  
APN 006-163-041 & -055 (PORTION)  
D.N. 2022-075740

LANDS OF  
NORTH RIVER APARTMENTS, LLC  
APN 006-163-055 (PORTION)  
D.N. 2022-075741

SCALE: 1"=100'

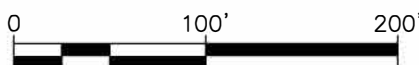


CINQUINI & PASSARINO, INC.  
LAND SURVEYING

- ▲ BOUNDARY
- ▲ TOPOGRAPHIC
- ▲ CONSTRUCTION
- ▲ SUBDIVISIONS

1360 No. Dutton Ave.  
Santa Rosa, Ca. 95401  
Phone: (707) 542-6268  
Fax: (707) 542-2106

WWW.CINQUINIPASSARINO.COM

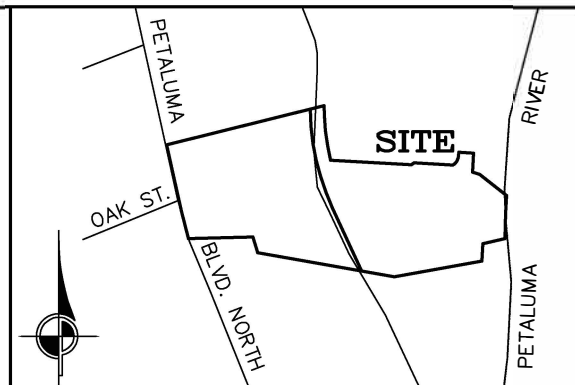


|  |                  |                 |
|--|------------------|-----------------|
| JOB NAME: NORTH RIVER APARTMENTS                                 | DRAWN BY: AGC    | CHECKED BY: MMD |
| DESCRIPTION: PUBLIC EASEMENT FOR SEWER PURPOSES VACATION EXHIBIT | SCALE: 1" = 100' | DATE: 2/8/2023  |
|  | JOB #: 7030-15   | PAGE: 1 OF 1    |

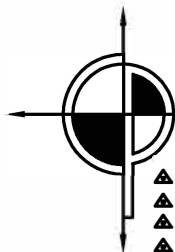
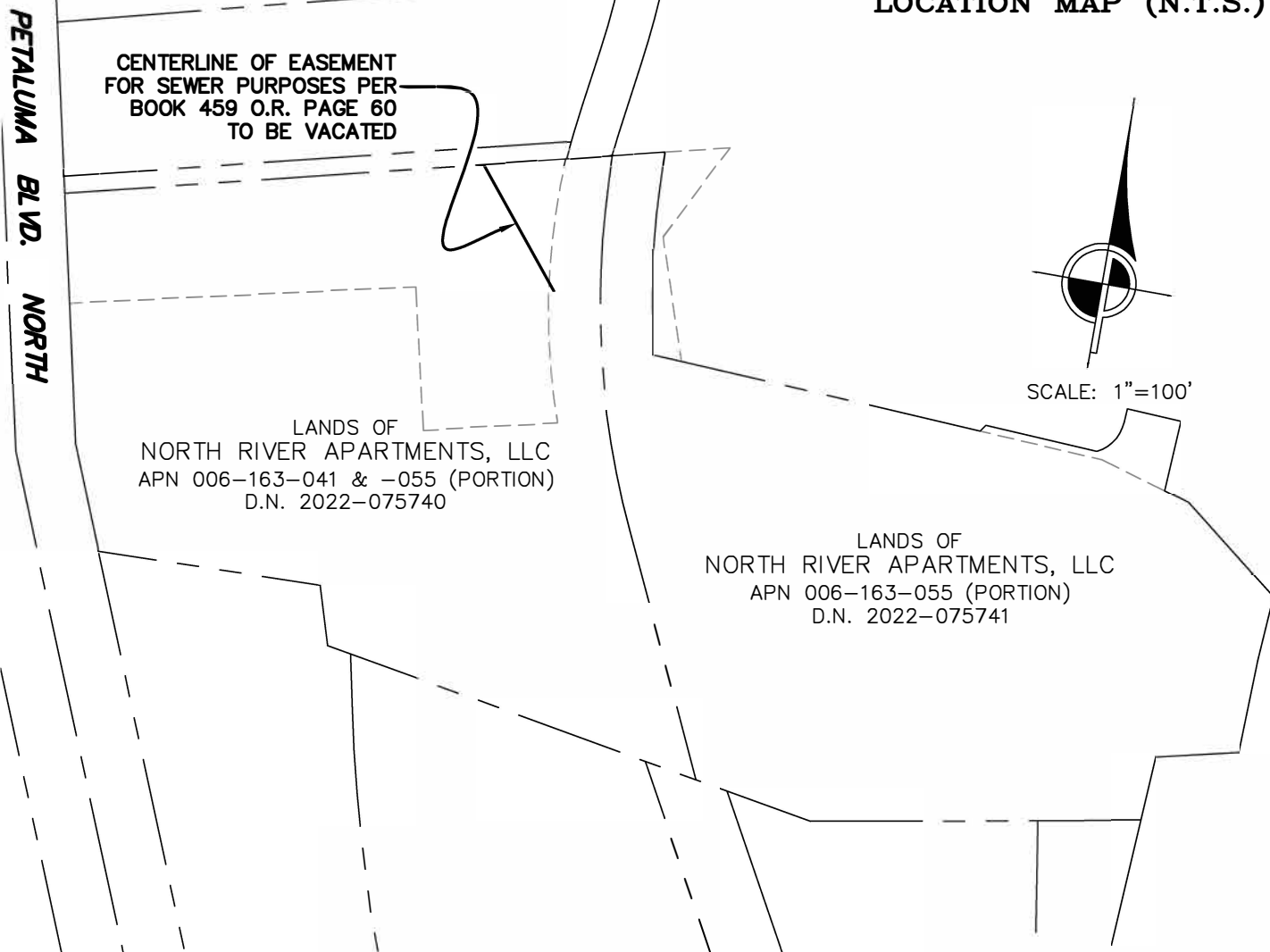
# EXHIBIT A

## ABBREVIATIONS

D.N. DOCUMENT NUMBER  
O.R. OFFICIAL RECORD, SONOMA COUNTY



CITY OF PETALUMA  
LOCATION MAP (N.T.S.)

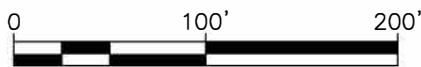


CINQUINI & PASSARINO, INC.  
LAND SURVEYING

- ▲ BOUNDARY
- ▲ TOPOGRAPHIC
- ▲ CONSTRUCTION
- ▲ SUBDIVISIONS

1360 No. Dutton Ave.  
Santa Rosa, Ca. 95401  
Phone: (707) 542-6268  
Fax: (707) 542-2106

WWW.CINQUINIPASSARINO.COM

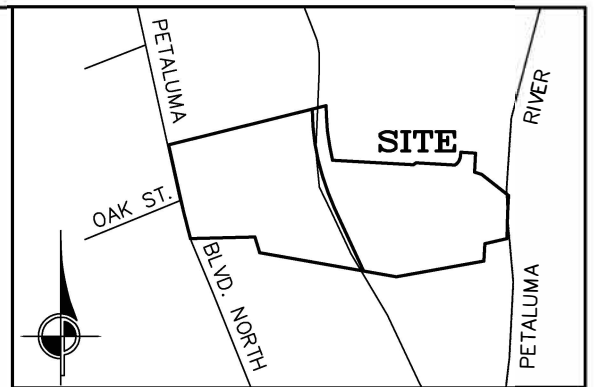


|  |                  |                 |
|--|------------------|-----------------|
| JOB NAME: NORTH RIVER APARTMENTS                 | DRAWN BY: AGC    | CHECKED BY: MMD |
| DESCRIPTION: PUBLIC EASEMENT<br>VACATION EXHIBIT | SCALE: 1" = 100' | DATE: 2/8/2023  |
|  | JOB #: 7030-15   | PAGE: 1 OF 1    |

# EXHIBIT A

## ABBREVIATIONS

D.N. DOCUMENT NUMBER  
O.R. OFFICIAL RECORD, SONOMA COUNTY



CITY OF PETALUMA  
LOCATION MAP (N.T.S.)

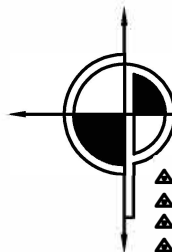
PETALUMA BLVD. NORTH

LANDS OF  
NORTH RIVER APARTMENTS, LLC  
APN 006-163-041 & -055 (PORTION)  
D.N. 2022-075740

GRANT OF UTILITY  
EASEMENT PER  
BOOK 2347 O.R. PAGE 474  
TO BE VACATED

LANDS OF  
NORTH RIVER APARTMENTS, LLC  
APN 006-163-055 (PORTION)  
D.N. 2022-075741

SCALE: 1"=100'

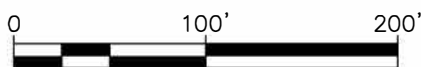


CINQUINI & PASSARINO, INC.  
LAND SURVEYING

- ▲ BOUNDARY
- ▲ TOPOGRAPHIC
- ▲ CONSTRUCTION
- ▲ SUBDIVISIONS

1360 No. Dutton Ave.  
Santa Rosa, Ca. 95401  
Phone: (707) 542-6268  
Fax: (707) 542-2106

WWW.CINQUINIPASSARINO.COM



|  |                  |                 |
|--|------------------|-----------------|
| JOB NAME: NORTH RIVER APARTMENTS                         | DRAWN BY: AGC    | CHECKED BY: MMD |
| DESCRIPTION: PUBLIC UTILITY EASEMENT<br>VACATION EXHIBIT | SCALE: 1" = 100' | DATE: 2/8/2023  |
|  | JOB #: 7030-15   | PAGE: 1 OF 1    |